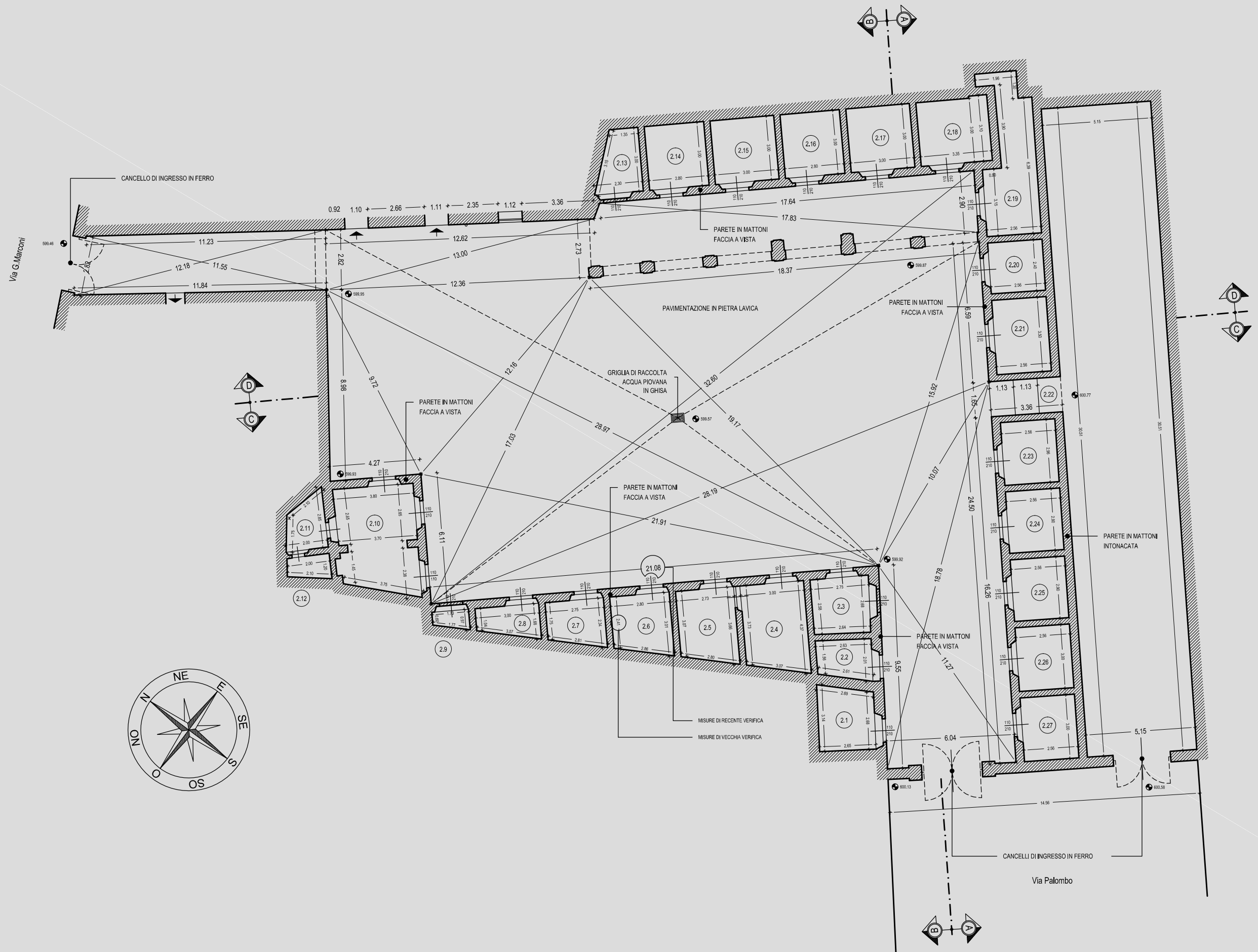


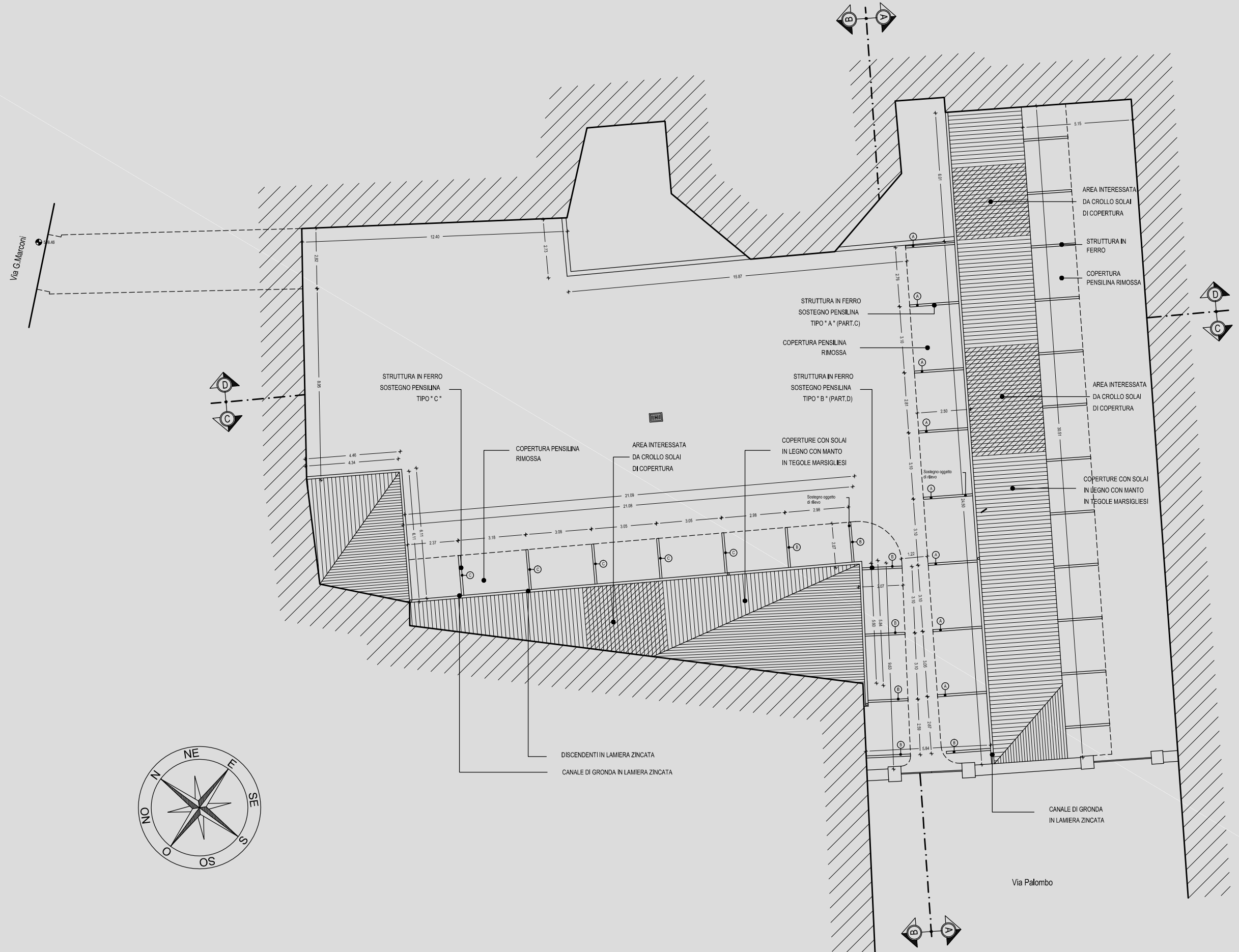


Progetto Piazzetta  
Palombo

# PLANIMETRIA DI RILIEVO - ATTACCO A TERRA

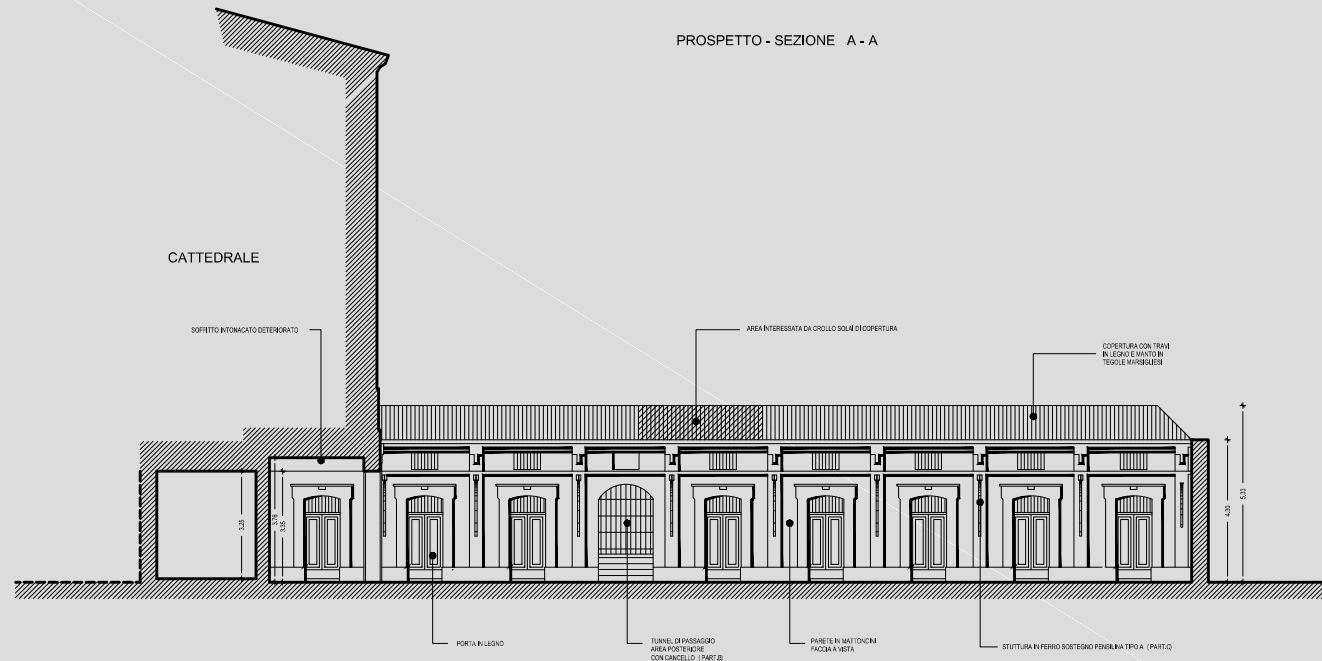


# PLANIMETRIA DI RILIEVO - COPERTURA

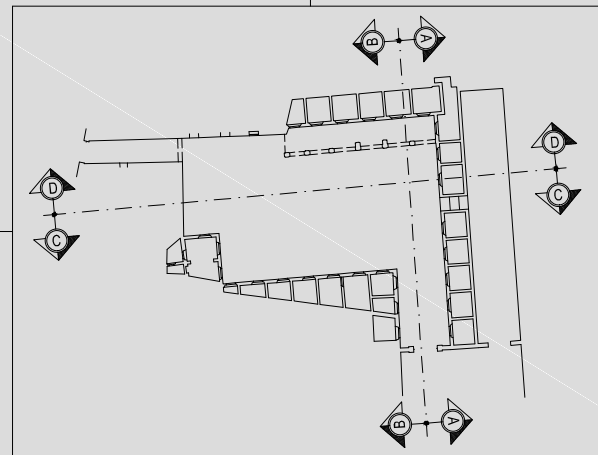
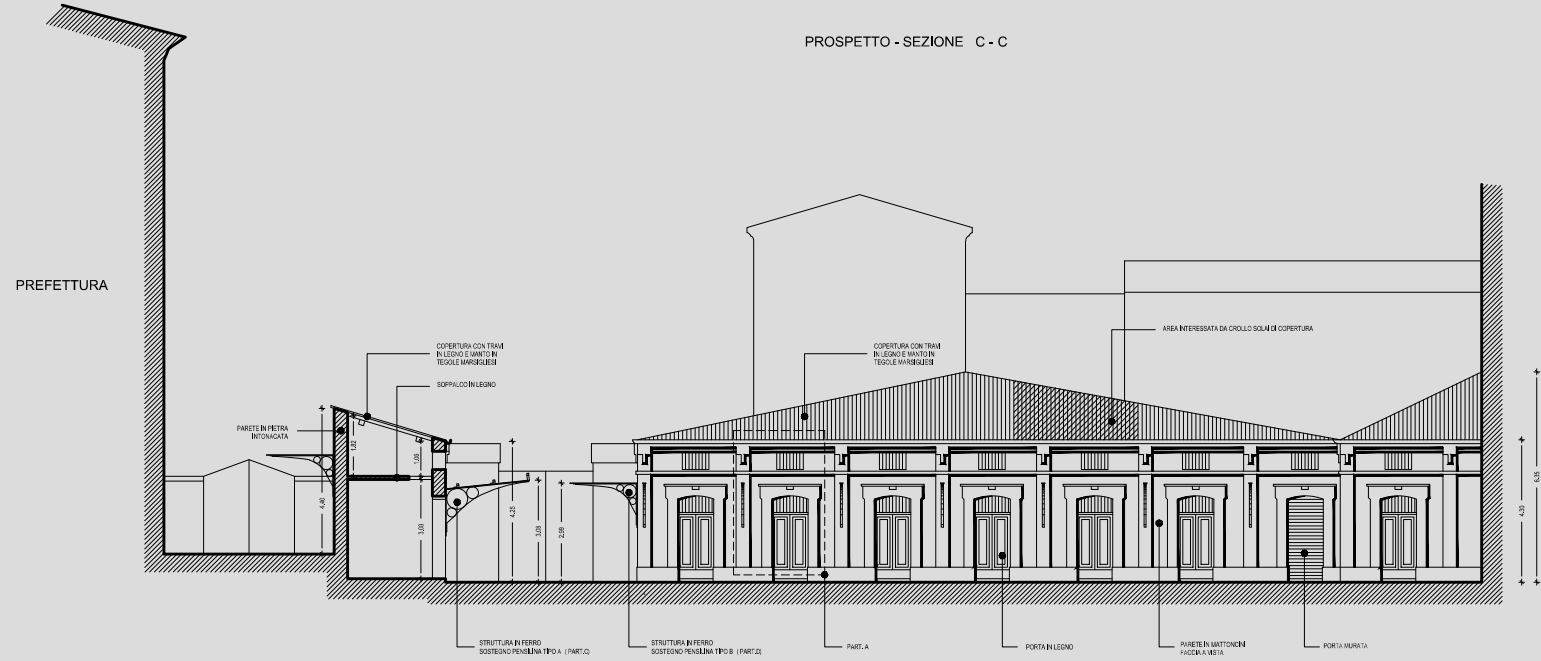


PROSPETTI - STATO DI FATTO

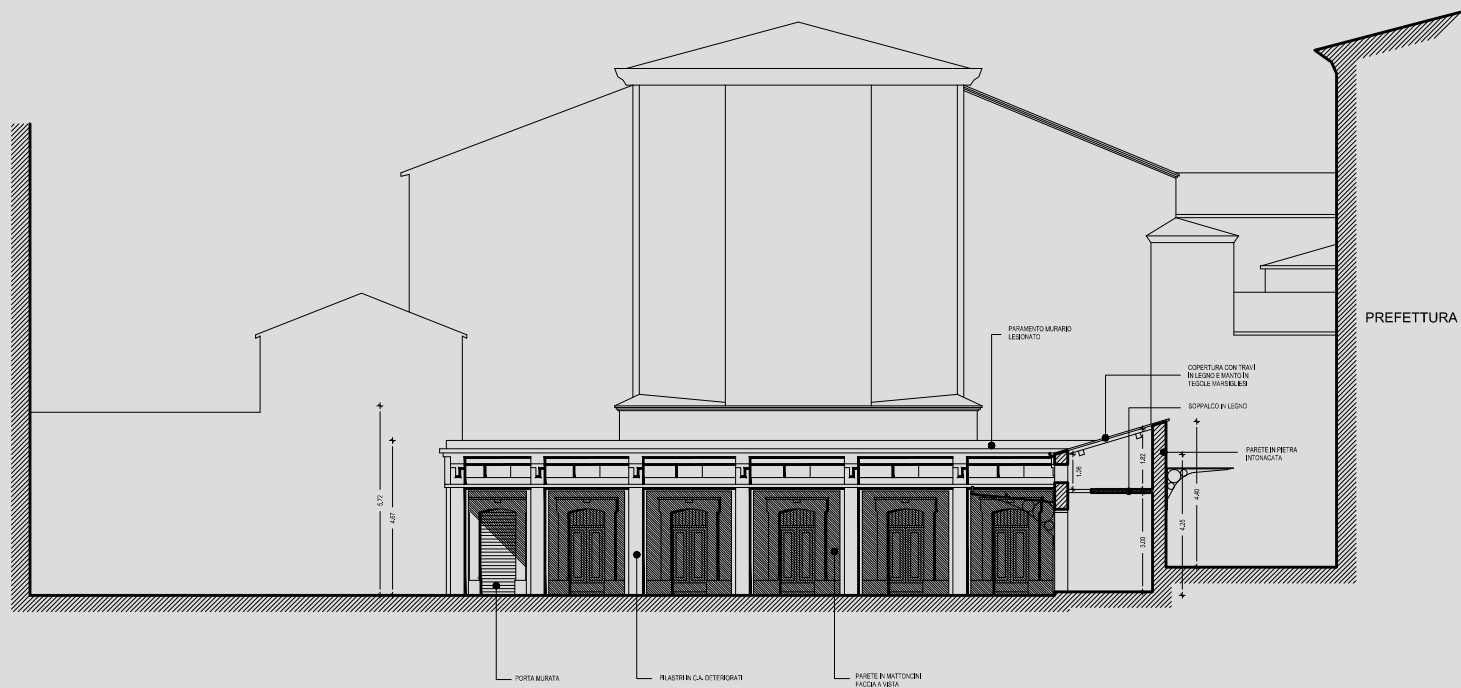
PROSPETTO - SEZIONE A - A



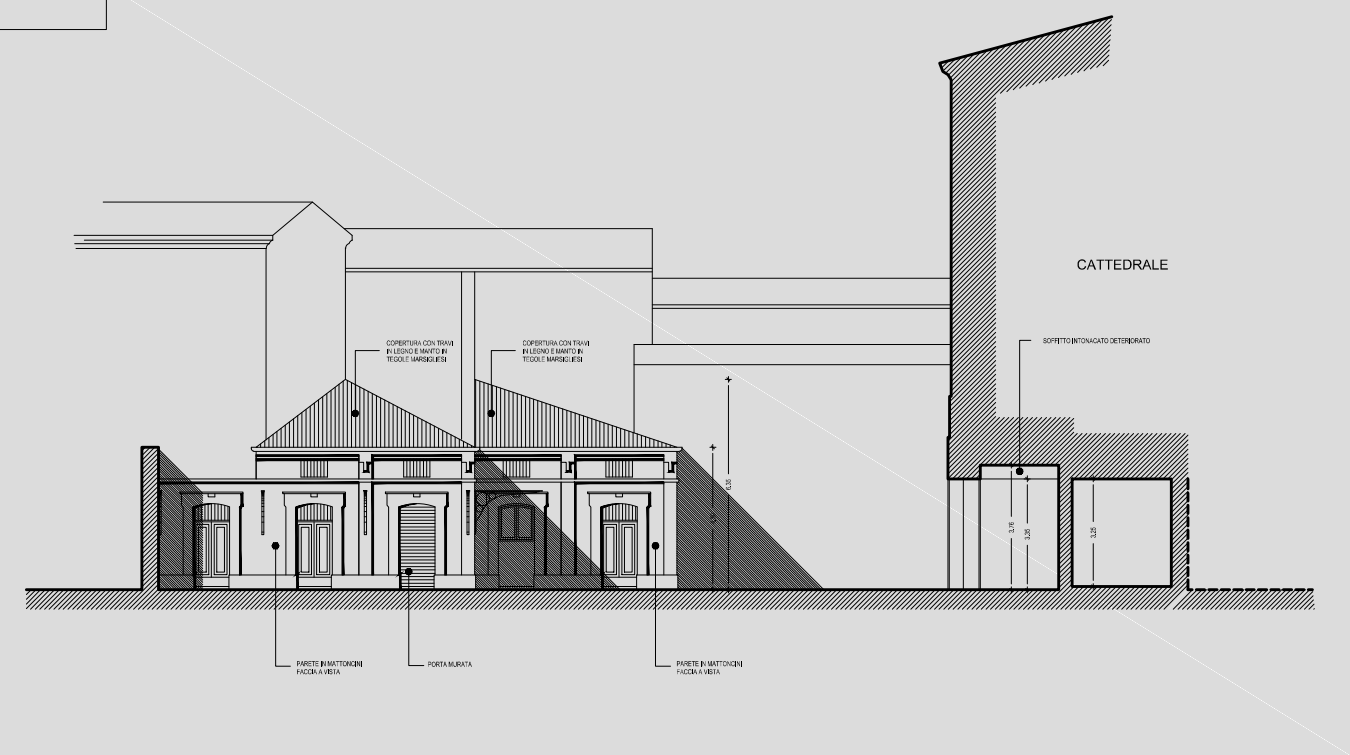
PROSPETTO - SEZIONE C - C



PROSPETTO - SEZIONE D - D



PROSPETTO - SEZIONE B - B













DOCUMENTAZIONE FOTOGRAFICA - REALIZZAZIONE

